

OWNER: Key Largo Fire Rescue and EMS District
 PROJ: Fire Station 1 Expansion
 LOC.: Key Largo, Florida
 TITLE: BUDGETARY ESTIMATE

DATE : 30-Jun-09

BKV
 GROUP

REV# :
 PROJ# :
 FILE# :

4,009

NEW SQ.FT
 (Addition)

Grant Funding Summary

613
 4,622

REMODEL

Item	Cost Classification	Budget Classification	Unit Measurement	Unit Quantity	Unit Cost	Section Cost Estimate
Building Construction	Construction	Contracts for Construction	Square Foot	4,622	\$182.00	\$841,204
Site Preparation	Site Work	Contracts for Construction	Square Yard	6,667.00	\$13.17	\$87,804
Design / Planning	Architectural/Engineering Fees	Non-Related Contracts	Lump Sum	1	\$150,881.00	\$150,881
Sprinklers / Fire Suppression	Construction	Contracts for Construction	Square Foot	13,921	\$3.10	\$43,155
Kitchen Appliances	Equipment	Equipment	Item	12	\$2,292.00	\$27,504
ADA Compliance	Construction	Contracts for Construction	Square Foot	13,921	\$2.83	\$39,396
Temporary Structures (dorm)	Relocation Expenses	Other	Per Month	8	\$1,250.00	\$10,000
Total Project Cost						\$1,258,056
Subtotal - Grant Request						\$1,199,945
Non-Grant Qualifying Project Costs						\$58,111

OWNER: Key Largo Fire Rescue and EMS District
 PROJ: Fire Station 1 Expansion
 LOC.: Key Largo, Florida
 TITLE: BUDGETARY ESTIMATE

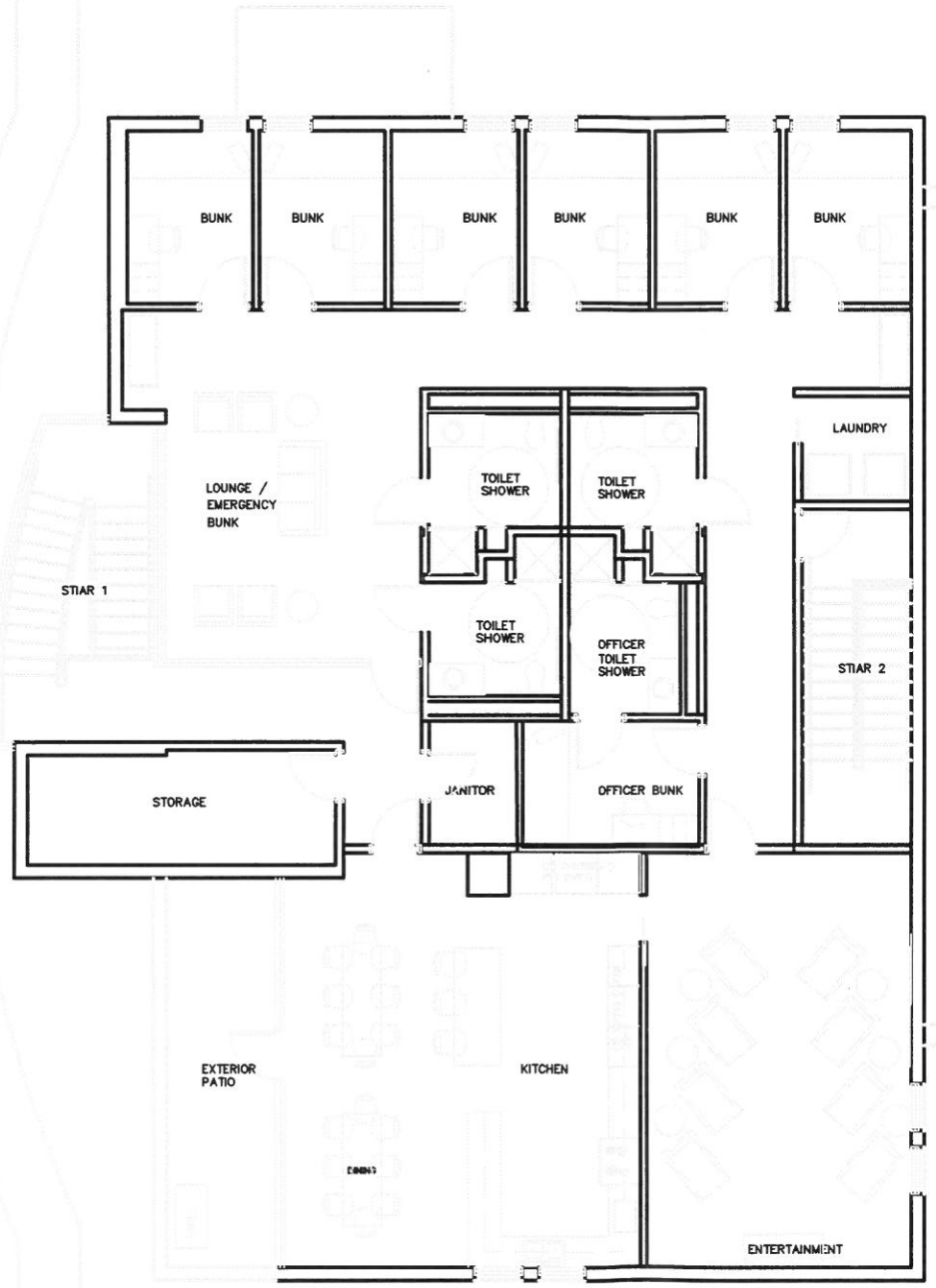
DATE: 30-Jun-09
 REV#:
 PROJ#:
 FILE#:



NEW SQ FT	4,009
(Addition)	
REMODEL	613
	4,622

Concept Estimate - Fire Station 1

DESCRIPTION	COST/ BUILDING	COST SF	SUB TOTAL	PERCENT TOTAL
ADMINISTRATION		\$3.74	\$17,300	1.38%
LEGAL, FISCAL & ADMINISTRATIVE	\$5,000			0.40%
LAND ACQUISITION	\$0			0.00%
SOIL BORINGS	\$0			0.28%
SURVEY	\$3,500			0.70%
TEMPORARY QUARTERS (TRAILER RENTAL)	\$8,800			
CONSTRUCTION COSTS		\$190.45	\$880,267	69.97%
PERMITS	\$989			0.08%
DEMOLITION - EXISTING EXTERIOR CANOPY AND WALL	\$10,000			0.79%
SITEWORK - UTILITIES ALLOWANCE	\$50,000			3.97%
SITEWORK - PAVEMENT / LANDSCAPING	\$28,000			2.23%
FIRE SUPPRESSION (EXISTING AND EXPANSION)	\$37,968			3.02%
ADA COMPLIANCE	\$35,000			2.78%
BUILDING CONSTRUCTION - NEW	\$681,530			54.17%
BUILDING CONSTRUCTION - RENOVATION	\$36,780			2.92%
FEES		\$25.85	\$119,489	9.50%
A/E DESIGN AND BIDDING FEES	\$80,888			6.43%
COST ESTIMATOR	\$2,000			0.16%
LANDSCAPE / CIVIL ENGINEERING	\$11,597			0.92%
REIMBURSABLE EXPENSES	\$7,399			0.59%
SPECIAL INSPECTIONS AND TESTING	\$17,605			1.40%
	\$0			0.00%
FURNISHINGS, FIXTURES & EQUIPMENT (FF&E)		\$17.90	\$82,728	6.58%
CITY SAC/WAC (included in Utility allowance)				
OFFICE FURNITURE ALLOWANCE	\$6,400			0.51%
ASSEMBLY / DAYROOM FURNITURE ALLOWANCE	\$31,500			2.50%
BUNK ROOM FURNITURE ALLOWANCE	\$10,500			0.83%
KITCHEN EQUIPMENT ALLOWANCE	\$25,000			1.99%
LAUNDRY EQUIPMENT ALLOWANCE	\$3,200			0.25%
FF&E DESIGN FEES	\$6,128			0.49%
TECHNOLOGY		\$4.00	\$18,488	1.47%
DATA / TELEPHONE ALLOWANCE	\$18,488			1.47%
CCTV	\$0			0.00%
CONTINGENCY		\$30.24	\$139,784	11.11%
ESTIMATING (7.5%)	\$83,870			6.67%
PROJECT (5%)	\$55,914			4.44%
FINANCING		\$0.00	\$0	0.00%
BOND ISSUANCE COSTS	\$0			0.00%
INVESTMENT EARNINGS	\$0			0.00%
SUB-TOTAL 2010		\$272.19	\$1,258,056	100.00%
Annual Escalation at 4% inflation				
GRAND TOTAL - FY 2011		\$283.08	\$1,308,378	
GRAND TOTAL - FY 2012		\$294.40	\$1,360,713	
GRAND TOTAL - FY 2013		\$306.18	\$1,415,141	
GRAND TOTAL - FY 2014		\$318.42	\$1,471,747	



KEY LARGE
FIRE STATION 1
EXPANSION

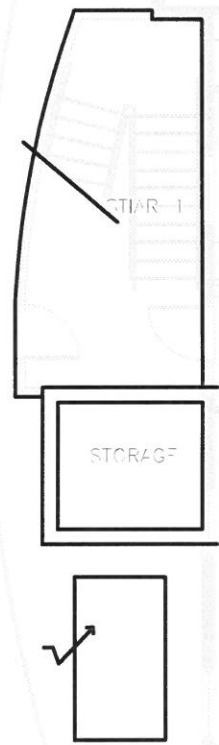
 **SECOND FLOOR**
PLAN
3/32" = 1'-0"

BKV
GROUP
Architecture
Interior Design
Engineering

Soorwan
Krupa
Nigel
Lynette
Vic

222 North Second Street
Providence, RI 02903
Direct: 402.339.9131
Main: 402.339.3752
Facsimile: 402.339.4212

ALTERED
PARKING
TO
ARCHED
CONFIGURATION



RENOVATED
FOR ADMIN

KEY LARGO
FIRE STATION 1
EXPANSION

 FIRST FLOOR
PLAN
3/16" = 1'-0"

BKV
GROUP

Architecture
Interior Design
Engineering

Boeraman
Kroos
Vogel
Group
inc.

222 North Second Street
Minneapolis, MN 55401
Direct: 612.339.9131
Main: 612.339.3752
Facsimile: 612.339.6212